

The Basildon Philatelist.

The Journal of Basildon Philatelic Society

Editor: L C Stanway FRPSL.

Vol. 16 No. 4 - April 2012

Editorial:

The society is pleased to welcome several new/returned members, but we must start with sad news.

Ivy Church

We are very sad to report that Ivy Church passed away in January. Although not a collector herself, Ivy has been a member and great friend of the society and its members ever since its inauguration over fifty years ago, and she was a familiar sight at events throughout Essex and beyond, supporting her son David and late husband John. She will be deeply missed by philatelists and friends everywhere. R.I.P.



Members of Basildon and many other societies attended her funeral and the Society provided a floral tribute in the form of a Machin stamp in gold.

The society also expresses its condolences to Ann Coltman on the recent loss of her mother.

International News

AUSTRALIA 2013 EXHIBITION

The only UK way to qualify for international competitions is through ABPS national exhibitions. To be eligible for five frames at an FIP, FEPA or other Continental Federation competition, it is necessary to achieve 75 points and a vermeil medal at a national exhibition (Eurothema and Thematica do not qualify).

Forthcoming international exhibitions are:

Paris Salon du Timbre, 8-17 June 2012. This is a FEPA show with FIP recognition with Postal History and Traditional classes only. Entries closed.

Indonesia '12, Jakarta, 18-24 June 2012. Entries closed.

Australia 2013, Melbourne, Victoria, 10 to 15 May 2013. Commissioner: Richard West: (richjwest@btinternet.com). The closing date for entries is likely to be June 2012.

Thailand 2013, Bangkok, 2-8 August 2013. www.thailand2013.com: Commissioner Chris King.

Brasiliana 2013, Rio de Janeiro, 11-17 November 2013.

National News

ABPS HANDBOOK

The new edition of the ABPS Directory is still in preparation. The Speakers book was issued early in 2011 and updates are being published in *ABPS News*.

ABPS AWARD OF MERIT

Each year, the ABPS honours up to 15 grass roots philatelists that have made an outstanding contribution to a local or specialised society. Nomination forms for the 2013 awards can be obtained from Susan Oliver, ABPS Awards Committee Chairman/Secretary, 46 Woodville Road, Ham, Richmond-upon-Thames, TW10 7QN, 020-8940 9833, susan.m.oliver@virgin.net.

Nominations now can only be submitted by an ABPS member society and not by a federation. The closing date for entries is 1 March 2013.

ABPS ANNUAL GENERAL MEETING

The next annual meeting will be at 2pm on 21 July 2012 at RPSL. Please advise your Editor of anything you wish raised.

AUTUMN STAMPEX

26-29 September 2012. This will be a full national competition event and in addition will have an Australasian and Pacific theme with exhibits from The British Society of Australian Philately, The New Zealand Society of Great Britain and The Pacific Islands Study Circle.

WORLD POST DAY

How can we get the society and/or the hobby noticed on World Post Day 9 October 2012, which marks the anniversary of the establishment of the Universal Postal Union? Tell us now!

2012 NATIONAL EXHIBITION

The 2012 ABPS National Exhibition will be held in Scotland on 18-20 October 2012 at Dewar's Centre, Glover Street, Perth PH2 0TH.

PHILATELIC CONGRESS OF GREAT BRITAIN.

Congress is becoming increasingly important as the main opportunity each year to enter into discussions with ABPS officers and all readers are encouraged to consider attending to ensure that the grass roots views reach the "powers that be" in the hobby (and vice versa). It is always a wonderful chance to see outstanding displays and meet other collectors in all disciplines.

Congress 2012 will be held at Queen's Hotel in Perth, Scotland, from 20-22 October, following on from the National exhibition.

MIDPEX

Midpex 2013 is scheduled for 6 July 2013. Further information: bobharper@btinternet.com

ABPS EXHIBITING SEMINARS

Are you interested in seeing these events but unable to go to London? Whilst you get much more out of being there, you can now view them in the comfort of your own home. The ABPS has posted the PowerPoint presentations in PDF form on its website at <http://www.abps.org.uk/Exhibiting/Seminars/index.xalter> for you to view or down load. The following titles are available and others are added from time to time:

- Introduction to Exhibiting;
 - Postal History Class 2C;
 - Presentation;
 - Title or Introductory Page;
 - Treatment in the Traditional Class;
 - ABPS Judging Seminar Part One.
-

BRITISH THEMATIC ASSOCIATION

For information on BTA activities, contact Peter Denly, 9 Oaklands Park, Bishops Stortford, Hertfordshire CM23 2BY or www.brit-thematic-assoc.com.

ABPS WEBSITE

The ABPS website contains a wealth of valuable information. Please visit it at <http://abps.org.uk/>. All ABPS societies are listed with their contact details. Please advise the ABPS of any necessary changes.

Essex News

DAWES CUP

This year's Home Counties inter-federation competition was hosted by Kent. It was won by Essex, the first time in three years that Surrey has failed to go home with the trophy. The Essex team was Chris Cooksey (Basildon), Ian Stevenson, Peter Denly, David Armitage and Colin Banfield who gained a total of 419 marks, followed by Kent (409), Surrey (395), Sussex (372). Chris showed "Up-, Under- and Over-rated postmarks of British South Africa" which was awarded 87 marks.

AEPS EVENTS

AEPS Council Meeting was held on 24 March at Rayleigh, attended by Alan Taylor, John Cowlin and Len Stanway. The key development was the appointment of Chris Wood of Bishop's Stortford as Acting Treasurer until the AGM, in place of the late Eric Day.

The Association is still seeking a solution to the storage and transport of display frames following the retirement of Malcolm Roberts. AEPS is seeking secure hard-standing for two 20-foot containers.

Basildon confirmed that we have booked James Hornsby School for the Spring 2013 AEPS event on 27 April 2013 and Cheshunt will host the Autumn event on 28 September 2013 at Cheshunt School

PHILATELY IN ESSEX 2012

If you want to find out about any society in the county, county competition rules or a catalogue of Essex event covers, speakers, judges, etc.,

please ask the Secretary to show you Philately In Essex, the AEPS Handbook.

The 2012 Supplement is available from the AEPS for £5 or the whole loose-leaf book can be purchased for £10. Contact Len Stanway if you would like to buy a copy.

If you want to be included as a speaker in the AEPS Register of Displays, please contact Len Stanway.

AEPS RAFFLE

The annual raffle is an important source of income for the Association in its work to promote philately in our area. Every society Secretary has been supplied with raffle tickets priced at 50p each or £2.50 a book. This year's top prize is an eTouch 7" Android Tablet. Please support the Association by buying some. In Basildon, Len Stanway is handling sales. Please direct any queries to David Sibley sibley63@btinternet.com or 01376-561843

NEXT AEPS EVENTS

The next Council meeting, to which we can send up to 3 delegates, will be at 2.30pm on **7 July at Spring Lodge, Witham**. If you have issues to raise, please contact Len, Alan, Ian McElwain or John Cowlin.

Spring StampEssex 2012 will be held on 19 May at Leventhorpe School, Sawbridgeworth from 10am to 4pm, organised by Bishop's Stortford society.

Autumn StampEssex 2012 will be held on 6 October at Spring Lodge Community Centre, Powers Hall End, Witham, CM8 2HE, from 10am to 4pm, organised by Witham society. Admission free and refreshments available.

Workshop 2013 will be held on 26 January at Henry Dixon Hall, Henry Dixon Road. Rivenhall End, Witham, Essex. CM8 3HR. The theme and cost (which includes lunch and refreshments) are still to be announced. Contact Ray How for more detail.

ALBUMS CLOSED

We are very sad to record the sudden and unexpected passing on 19 January of Eric Day of Rayleigh, the Treasurer of both that society and of AEPS, a past Chairman of AEPS and a staunch supporter of several specialist societies. He was also deeply involved in Scouting and his

church. Len and Anne Stanway represented the society at the funeral.

Basildon Society News

MEETING REPORTS by "Fly On The Wall"

20 December Festive Night.

Our Festive Night started with the traditional quiz, set this year by Len Stanway. The winner was Charlie Mead with 20½ marks out of 28, followed by David Perry (15½) and Claude Crowder (12½). Ann Coltman, our Archivist, took us down memory lane with a display of press cuttings from the Society's archives and reminded members that she would like to receive any present or past press cuttings that members find, or any other mementoes of past activities, such as programme cards, etc. While viewing this display, members enjoyed the usual varied bring and share buffet.

9 January: "Law and Order" by Ray How.

Ray took us on a trip through police history and continued with a world-wide variety of police duties and uniforms. This comprehensive thematic display showed how the subject presents the scope for a wide variety of studies and was enlivened with a large number of anecdotes from Ray's experience as a police officer and his knowledge of the personalities featured in items in the display.

24 January: "B is for ?" - Members' Displays.

A well-attended meeting saw ten members display. John Snoding started the display with Boy Scouting, followed by Ann Coltman's new display of "Brilliant People" (i.e. inventors), which is still in the development phase. Dave Perry completed the first round with covers from a selection of "B" countries.

Claude Crowder started the second round with Bahamas, followed by Maggie Thompson's Triangulars from Bhutan, Bolivia and Brazil, followed by GB Booklets from Alf Potter.

Vivien Hollaway provided Birds, Boxing, Bridges, St Bernadette, the Brontes and Robert Burns. Chris Cooksey completed the third round with Blocks of Rhodesia.

The evening ended with British North Borneo to 1897 from Len Stanway and a recently-compiled display of Basildon Philatelic Society material from Alan Taylor's collection.

6 February: "Singapore" by Len Stanway.

Rather than spread the display too thinly, Len chose to start with the creation of the Crown Colony after World War Two and then gave a comprehensive display of stamps, postal stationery, revenue stamps and other material from 1948 to 1986. The story can be continued at a later date!

21 February: Stamp Collectors' Question Time.

Unfortunately, our Chairman, who originally conceived this meeting, was ill. The idea was that members should bring their problems and the combined minds of those present could be set to solving them. Len Stanway took the role of Convenor and was pleasantly surprised to have to bring discussion to a close at "chucking out time"!

Discussion began with the different types of perforators and how to recognise them. Other topics discussed included the meaning of "unmounted mint", how to detect chalk-surfaced paper, the ultra-violet lamp and its role in philately, and the possibility of getting a presentation by a printer. A common theme that arose in discussion was how vague and often inappropriate many terms used in "philatelic English" were. During the break, a number of items were examined and identified for members.

Members' responses to the evening appear positive and a further session may be included in next year's programme.

5 March: Jamaica by Paul Green.



Paul's display began with the early history of Jamaica, which was discovered in 1494, gained a post office in 1660 and briefly had a packet service in 1745-1749. Apart from this period,

early mail was carried by private ships. The colony originally used British stamps from 1858, but gained its own in 1860, which were shown as plate proofs. Paul then took us systematically through the stamp and postal stationery issues up to 1960. Also included were the charity label issues of both World Wars, the German "Liquidation of Empire" forgeries, prominent varieties and slogan postmarks. A separate section dealt with the postal history of Gibraltar Camp, which housed civilian evacuees from Gibraltar during World War Two. The able-bodied men from the camp were then enlisted in the Pioneer Corps to guard the Prisoner of War and internment camps on the island!

20 March: Display by Chelmsford & District P.S.



Our visiting team from the neighbouring, newly-established "big city" gave us an interesting and varied evening. Nick Harris started with mail from prisoners of war during the Boer War. Between 1899 and 1900, captured British troops were held in camps near Pretoria in the Transvaal, with the USA acting as an intermediary to ensure prompt transfer of mail to and from the prisoners. As the tide of the war turned, Boer prisoners were held in ships at Durban, then transferred to camps in St Helena, Bermuda, India and Ceylon.

Eric Lienhard displayed Swiss postal stationery, which began far before the days of postage stamps. He began with postal receipts. Postal stationery envelopes were first introduced in 1799. Next were stamped-to-order stationery, money orders, exhibition souvenirs, airletters and postcards.

Pat Adams displayed Norway, beginning with shipping company cards and mail from Norwegian

ships abroad. The Tromsø local post followed, and cards from North Norway up to the Russian Border settlement of Boris Gleb. Finally, Pat presented a 16-sheet display of cards showing the effects of the disastrous fire at Aalesund on 23 January 1904.

FORTHCOMING BASILDON MEETINGS:

2 April - Auction. Please come and bid!

17 April - Competitions. 8-sheet traditional, postal history/postmarks, aerophilately and thematic. Bring YOUR entries!

15 May - Maritime Mail (Malcolm Roberts).

19 June - Annual General Meeting.

All meetings will be at George Hurd Centre (doors open 7.30pm):

WANTED - YOU!

We require the help of all members. If you see or hear about anything that you feel should be mentioned in this journal, please let the Editor know. We also need volunteers to do a brief report of each meeting, to spread the workload.

ARE YOU E-CONNECTED?

If you have an e-mail address, you could save the society money and keep yourself up to date with local philatelic news, programme changes and auction catalogues by sending your e-mail address to the Editor.

Non-members are also invited to join the e-mailing list to receive this newsletter and other society information.

RECENT MEMBER ACTIVITIES

John Cowlin displayed "Emergency Currency" to Benfleet on 7 February.

Charlie Mead displayed "Fiji" to Benfleet on 6 March.

Len Stanway displayed "Aspects of Malaya" to Cambridge society on 16 March and gave a 128-page static display of "Mails Under London" at Rayleigh Stamp Day on 24 March.

Article

The Whyte Arrangement (Part 7) by Len Stanway

Six-coupled designs (continued)

(Part 6 was published in issue 16-3)

A very rare six-coupled arrangement was the 4-6-6T. The example seen had no provision for external water tanks, so the bunker had to cater for the total coal and water needs of the locomotive between visits to the refuelling point.

Baltimore & Albany Railway's Class D12 of 1928 is a rare, possibly unique, example of the 4-6-6T arrangement.



Eight-coupled designs

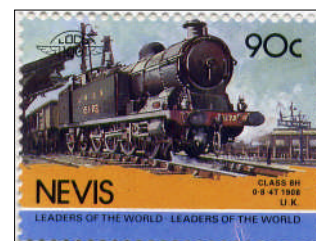
The 0-8-0 was an inevitable development of the 0-6-0 for slow-speed, heavy-haulage freight work. To minimise the fixed wheelbase (to allow it to go around curves, particularly in goods yards), small wheels were used, giving room for large cylinders ahead of the leading axle. It was, however, unstable even at moderate main-line speeds.



Mongolia's 750mm gauge line from Ulan Bator to Nalajh used this 0-8-0 Class KB4.

The 0-8-0T was the tank-engine version and a few heavy shunters were built but extra coal and water capacity made the 0-8-2T and 0-8-4T arrangements more desirable.

The Great Central Railway Class 8H 0-8-4T is a good example of this heavy tank engine type.



For faster main-line duties, the pony truck of the 2-8-0, also known as the "Consolidated" type, stabilised the locomotive and guided it through bends. It was adopted as the standard locomotive for British and USA Army general main-line haulage duties in both World Wars. An advantage was that it gave an overall length of a 2-8-0 was similar to a 4-6-2 and this fitted most turntables, whereas larger arrangements could exceed this length, leading to difficulty in turning locomotives at the end of their journeys.

This Polish 2-8-0 dates from 1920.



The 2-8-2 "Mikado" was a popular arrangement in some countries, as it allowed a larger firebox for poor fuel or higher power outputs.



When East African Railways broke up, Uganda gained this 2-8-2 type.

The 2-8-4 was less usual, but allowed a larger firebox and a longer boiler for more steam generation.

Russia's generous loading gauge and 1524mm track allowed large locomotives, such as this giant 2-8-4.



The 2-8-4T was used by some European railways as a solution to the problem of growing commuter traffic in big cities, a problem that was ultimately only solved by electrification.



Deutsche Reichsbahn Class 83.10 is an impressive example of the commuter heavy tank engine.

The front bogie of the 4-8-0 gave improved guidance over the 2-8-0, which was a particular advantage in countries with narrow-gauge lines.

Rhodesian Railways were divided between Malawi, Zambia and Zimbabwe, the first-named receiving this 4-8-0.



The 4-8-2 was the largest passenger design put into volume production, being popular in mountainous countries as an enlarged version of the 4-6-2 "Pacific" type.



New Zealand Railways operated this Class Ja 4-8-2 on key heavy passenger services in its hill country.

The ultimate eight-coupled passenger locomotive was the 4-8-4, with a front bogie for high-speed cornering and a trailing bogie supporting a huge firebox, which usually needed either two firemen or a mechanical stoker to feed its ferocious appetite.

The wide-open spaces of the USA, Canada and



Australia encouraged the development of giant locomotives, particularly in their mountainous areas, but also for long and heavy trains. This was Canadian National's Class U2a 4-8-4.

ARTICLES WANTED

Members are invited to write short articles for inclusion in the newsletter. Please submit them to the Editor.

RESOURCES AVAILABLE

Ann Coltman holds the Society's Library with many catalogues and reference books that members can borrow to research their collections and to find out how to get more from our hobby. The library also contains philatelic aids, such as

the Signoscope watermark detector and ultra-violet lamps. Sample stamps and a catalogue is brought by Ann to most meetings. Members can ask her to bring particular items to the next meeting for them to borrow until the following meeting.

Ann also holds the Society's archives. If you find any old documents, programmes, etc., or see any reference to the society in the current press, Ann would welcome them in case they fill gaps in the collection.

Have **you** visited the British Postal Museum and Archives? Situated in Phoenix Place, Islington, London, behind the large Mount Pleasant sorting office complex, it is free to use (although it is necessary to register as a reader on your first visit). It contains a large philatelic library, plus the official records of the Royal Mail. As well as files of original documents and artefacts (of which a catalogue is available on the internet), it also has postmark registers, post office staff records and many other source documents of value to both the philatelist and the family historian.

SUBSCRIPTION TO THIS JOURNAL

This newsletter is published in both electronic and hard-copy formats. The hard-copy version is distributed only to members of the society who do not have e-mail facilities. The electronic version is sent to all members who have e-mail. It is also available free-of-charge to any interested collector outside the society. To request addition to the distribution list, please contact the Editor.

SMALL ADS

Society members are entitled to insert one small advertisement free of charge in each issue. Please send your advert to the Editor.

Malaysia - First day covers for sale. Many issues available. Wants lists to Len Stanway.



Philatelic Events in AEPS Societies April - June 2012

April 2012:

- 2 Basildon - Auction.
- 2 Frinton - Annual General Meeting and Displays.
- 3 Benfleet - Spain to 1936 (T Hawkins).
- 3 Sudbury - Afternoon Meeting.

- 4 Bishop's Stortford * - Television (M Routh).
- 4 Clacton - AGM and Competition.
- 5 Billericay - United Nations Postal Administration (L C Stanway).
- 10 Braintree - Display by Sudbury P.S.
- 10 Bury St Edmunds - Man's Marine Adventure (P Denly).
- 10 Chelmsford - Display by Cambridge P.S.
- 10 Epping Forest - Competitions.
- 11 Brentwood - Annual General Meeting and Quiz.
- 11 Ipswich - The Blue Lamp (R E How).
- 12 Hullbridge - Annual General Meeting.
- 12 Witham - GB Exhibitions Pt.2. 1938 to the Dome (D Knight).
- 14 Leytonstone & Wanstead - STAMP FAIR, Pastoral Centre of the Church of Our Lady of Lourdes, 51 Cambridge Park, Wanstead E11 2PR.
- 16 Cheshunt - Annual General Meeting & Bourse.
- 16 Frinton - Television (M Routh).
- 17 Basildon - Competitions.
- 17 Sudbury - Auction.
- 18 Bishop's Stortford - Something Old, Something New (Members).
- 18 Goodmayes - Display by AEPS Officers.
- 19 Billericay - Annual General Meeting.
- 20 Colchester - Emergency Currency (J Cowlin).
- 23 Leytonstone & Wanstead - Bring & Buy and mini-auction.
- 23 Rayleigh - Competitions and Bourse.
- 24 Braintree - Competitions.
- 24 Bury St Edmunds - Display by Isle of Ely P.S.
- 24 Chelmsford - Aspects of Canada (D Armitage).
- 25 Brentwood - Open Evening.
- 25 Ipswich - History of an Irish Family (J Rawlins).
- 26 Shoeburyness - Mails Under London (L Stanway).
- 26 Witham - 8 sheets or 30p (Members).
- 30 Frinton / Clacton / Colchester / Ipswich - Wordsworth Cup (at Frinton).

May 2012:

- 1 Benfleet - AGM and Mini - auction.
- 1 Sudbury - Display by Bury St. Edmunds P.S.
- 2 Bishop's Stortford * - AGM and Competitions.
- 2 Clacton - (Provisional date).
- 2 Goodmayes - Bring & Buy and Committee Meeting.
- 3 Billericay - Flowers on Stamps (Members).
- 4 Clacton - Auction.
- 8 Braintree - Left-overs (Members).
- 8 Bury St Edmunds - AGM & Mini - Auction.
- 8 Chelmsford - Iraq (G P Green).
- 8 Epping Forest - Display by Chelmsford & Dist. P.S.
- 9 Brentwood - Aspects of Malaya (L Stanway).
- 9 Ipswich - President's Night.
- 10 Hullbridge - Sheets from my Album (Members).
- 10 Witham - Aspects of Malaya (L Stanway).
- 12 Leytonstone & Wanstead - AGM and mini-auction.
- 14 Frinton - Olympic Games 1936 (A J Bosworth).
- 14 Cheshunt - Ruhleben Internment Period 1914 1918 (D Stone).
- 14 Rayleigh - Jamaica (G P Green).

- 15 Basildon - Maritime Mail (M K Roberts).
 15 Sudbury - Annual General Meeting.
 16 Bishop's Stortford - Mail from any island (Members).
 16 Goodmayes - John Scutt entertains.
 17 Billericay - The Saar Area 1935 1948 (Mrs M Thompson).
 18 Colchester - Channel Islands Occupation (A Moorcroft).
19 AEPS/Bishop's Stortford - Spring STAMPESSEX, Leventhorpe Academy, Sawbridgeworth, Herts. CM21 9BY.
 22 Braintree - Annual General Meeting & Auction.
 22 Chelmsford - Wreck and Crash Covers (P Day).
 23 Brentwood - Open Evening.
 23 Ipswich - Annual General Meeting and Bourse.
 24 Witham - Wembley Exhibition (P Denly).
 28 Rayleigh - Early France (G Oliver).
 31 Shoeburyness - Club Night & Rayleigh v Shoeburyness Quiz.

June 2012:

- 1 Clacton - Bourse and Competition.
 4 Frinton - Faeroes (D Church).
 6 Bishop's Stortford * - Southern Rhodesia (C Cooksey).
 6 Clacton - (Provisional date).
 6 Goodmayes - Annual General Meeting.
 7 Billericay - Open Night with Dealers.
 7 Witham - Libya (A H Boyce).
 11 Rayleigh - Bourse.
 12 Chelmsford - Ascension Islands (R Jeal).
 13 Brentwood - Greek Islands (Alan Boyce).
 14 Hullbridge - Banknotes 1900 onwards (J Cowlin).
 15 Colchester - Bourse and Room Auction.
 18 Cheshunt - Aspects of Canada (D Armitage).
 19 Basildon - Annual General Meeting.
 19 Sudbury - Channel Islands (J Aitchison).
 20 Bishop's Stortford - King George VI (Members).
 20 Goodmayes - Auction.
 21 Billericay - French stamps from 1945 (G Oliver).
 21 Witham - France (W I Stevenson).
 23 Epping Forest - Auction.
 25 Rayleigh - Display by Maurice Flack.
 26 Chelmsford - Garden Party at a Member's House
 27 Brentwood - Open Evening.
 28 Shoeburyness - Harry Sheldrake Comp. - I & J.

For venues, times, etc., contact the Editor or visit <http://www.wherewecanwego.com>, which is updated with the latest available information.

BPS Contact information

Chairman:

Charlie Mead, 70 Gernons, Basildon, Essex SS16 5TN. 01268-522052 (H), 07956-570884 (M). charlie.mead@aeps.org.uk

Secretary:

Alan Taylor, 5 Easton End, Laindon, Essex SS15 6QB. 07899-822881.

Membership:

Mick Coltman, 17 Little Dodden, Basildon, Essex, SS16 5TZ. 01268-413952.

Library and Archives:

Ann Coltman, 17 Little Dodden, Basildon, Essex, SS16 5TZ. 01268-413952.

Exchange Packet & Newsletter items:

Len Stanway, 25 Clay Hill Road, Basildon SS16 5DD, 01268-522305. len.stanway@btinternet.com

Auction:

Claude Crowder, Mayville, Brentwood Road, Dunton Wayletts, CM13 3SH. 01268-414143.

www.basildon.aeps.org.uk

Press Date

The intention is that the next issue should be published on 1 July Your news or articles should be with the Editor by 20 June at the latest.



Published by Basildon Philatelic Society, 25 Clay Hill Road, Basildon, Essex SS16 5DD.
 Founded 1968 - Non-Profit-Making - Affiliated to the Association of British Philatelic Societies
 and the Association of Essex Philatelic Societies.



Serving the stamp collectors and postal historians of Basildon.