

# The Basildon Philatelist.

The Journal of Basildon Philatelic Society

Editor: L C Stanway FRPSL.

Vol. 16 No. 3 - January 2012

## Editorial:

### HAPPY CHRISTMAS & NEW YEAR!

As I write this, winter is just beginning to remind us that Christmas is almost upon us. I would like to take this opportunity to wish you all a very Merry Christmas and a Happy and Prosperous New Year.

---

## International News

---

### AUSTRALIA 2013 EXHIBITION

This international exhibition will be held from 10 to 15 May 2013 at the Royal Exhibition Building, Melbourne, Victoria. The British Commissioner is Richard West: (richjwest@btinternet.com). The closing date for entries is likely to be June 2012.

The only UK way to qualify for international competitions is through ABPS national exhibitions. To be eligible for five frames at an FIP, FEPA or other Continental Federation competition, it is necessary to achieve 75 points and a vermeil medal at a national exhibition (Eurothema and Thematica do not qualify).

Other **forthcoming international exhibitions** are:

Paris Salon du Timbre, 8-17 June 2012. This is a FEPA show with FIP recognition with Postal History and Traditional classes only. Entries closed.

Indonesia '12, Jakarta, 18-24 June 2012. Entries closed.

Thailand 2013, Bangkok, 2-8 August 2013. www.thailand2013.com: Commissioner Chris King.

Brasiliana 2013, Rio de Janeiro, 11-17 November 2013.

---

## National News

---

### ABPS HANDBOOK

The new edition of the ABPS Directory is in preparation. The Chairman, John Baron, promised at the AGM to have it out by last autumn. This target date has now passed and no new date has yet been announced. The Speakers book was issued early in 2011 and updates are being published in *ABPS News*.

## SPRING STAMPEX 2012

At this 22-25 February 2012 event at the Business Design Centre, Islington, the theme of the national competition, open to all exhibitors in the United Kingdom and other FIP-affiliated countries, will be "The Pictorial Classes" - Thematic Philately, Postcard Class, Open Philately (including the former Open and Social Classes). Please see the ABPS website for entry forms.

In addition there will be three free seminars:

- Open Philately: Speakers will be Christine Earle and Birthe King (both gold medal winners and senior judges).

- Postcard Class: Seija-Riitta Laakso (a qualified postcard judge and author from Finland).

- Thematic Philately: Wolf Hess RDP (an FIP Thematic Philately judge and gold medal exhibitor).

---

## ABPS AWARD OF MERIT

Each year, the ABPS honours up to 15 grass roots philatelists that have made an outstanding contribution to a local or specialised society. Nomination forms for the 2012 awards can be obtained from Susan Oliver, ABPS Awards Committee Chairman/Secretary, 46 Woodville Road, Ham, Richmond-upon-Thames, TW10 7QN 020 8940 9833 [susan.m.oliver@virgin.net](mailto:susan.m.oliver@virgin.net).

Nominations can now be submitted only by an ABPS member society and not by a federation. The closing date for entries is 1 March 2012.

---

## ABPS ANNUAL GENERAL MEETING

The next annual meeting will be at 2pm on 21 July 2012 at RPSL. Please advise your Editor of anything you wish raised.

---

## AUTUMN STAMPEX

26-29 September 2012. This will be a full national competition event and in addition will have an Australasian and Pacific theme with exhibits from The British Society of Australian

Philately, The New Zealand Society of Great Britain and The Pacific Islands Study Circle.

---

### **WORLD POST DAY**

How can we get the society and/or the hobby noticed on World Post Day 9 October 2012, which marks the anniversary of the establishment of the Universal Postal Union? Tell us now!

---

### **2012 NATIONAL EXHIBITION**

The 2012 ABPS National Exhibition will be held in Scotland on 18-20 October 2012 at Dewar's Centre, Glover Street, Perth PH2 0TH.

---

### **PHILATELIC CONGRESS OF GREAT BRITAIN.**

As well as being an excellent philatelic weekend, Congress is becoming increasingly important as the main opportunity each year to enter into discussions with ABPS officers. All readers are encouraged to consider attending to ensure that the grass roots views reach the "powers that be" in the hobby (and vice versa). It is always a wonderful chance to see outstanding displays and meet other collectors in all disciplines.

Congress 2012 will be held at Queen's Hotel in Perth, Scotland, from 20-22 October, following on from the National exhibition.

---

### **MIDPEX**

A preliminary booking has been made for Midpex 2013 on 6 July 2013. For further information contact [bobharper@btinternet.com](mailto:bobharper@btinternet.com)

---

### **ABPS EXHIBITING SEMINARS**

Are you interested in seeing these events but unable to go to London? Whilst you get much more out of being there, you can now view them in the comfort of your own home. The ABPS has posted the PowerPoint presentations in PDF form on its website at <http://www.abps.org.uk/Exhibiting/Seminars/index.xalter> for you to view or download. The following titles are available and others are added from time to time:

- Introduction to Exhibiting;
  - Postal History Class 2C;
  - Presentation;
  - Title or Introductory Page;
  - Treatment in the Traditional Class;
  - ABPS Judging Seminar Part One.
- 

### **BRITISH THEMATIC ASSOCIATION**

For information on BTA activities, contact Peter Denly, 9 Oaklands Park, Bishops Stortford, Hertfordshire CM23 2BY or [www.brit-thematic-assoc.com](http://www.brit-thematic-assoc.com).

---

### **ABPS WEBSITE**

The ABPS website contains a wealth of valuable information, with more to come. Please visit it at <http://abps.org.uk/>. All ABPS societies are listed with contact details. Please advise the ABPS of any errors.

---

### ***Essex News***

---

### **AEPS EVENTS**

**AEPS Annual General and Council Meetings**, held on 12 November at Witham, were attended by John Cowlin and Len Stanway. The key development was the approval of the rules for a new Picture Postcard competition to be held in Spring 2012. The new rules will appear in the 2012 supplement to "Philately in Essex", but advance copies can be obtained from the Editor. Bill Trower of Hullbridge presented a silver salver to be used as a challenge trophy. The minimum subscription for very small societies was raised from £1 to £5, to reflect inflation over the very many years since this was set. Very few societies will be affected by this change.

---

### **PHILATELY IN ESSEX 2012**

If you want to find out about any society in the county, county competition rules or a catalogue of Essex event covers, speakers, judges, etc., please ask the Secretary to show you Philately In Essex, the AEPS Handbook.

The 2012 Supplement was due to be published on 1 January by the AEPS for £5 or the whole loose-leaf book can be purchased

for £10. Contact Len Stanway if you would like to buy a copy.

If you want to be included as a speaker in the AEPS Register of Displays, please contact Len Stanway.

### AEPS RAFFLE

The annual raffle is an important source of income for the Association in its work to promote philately in our area. Every society Secretary has been supplied with raffle tickets priced at 50p each or £2.50 a book. This year's top prize is an eTouch 7" Android Tablet. Please support the Association by buying some. In Basildon, the Editor is handling sales. Please direct any queries to David Sibley at [sibley63@btinternet.com](mailto:sibley63@btinternet.com) or 01376-561843

### NEXT AEPS EVENTS

**The next Council meeting**, to which we can send up to 3 delegates, will be at 2.30pm on **21 January** at **Spring Lodge, Witham CM8 2HE**. If you have issues to raise, please contact Len, Alan, Ian McElwain or John Cowlin.

**Workshop 2012**, with the theme of "**Collecting Postal History**", will be held on **28 January 2012** at Henry Dixon Hall, Henry Dixon Road, Rivenhall End, Witham, Essex. CM8 3HR. The price (including lunch) will be £20. Contact Ray How immediately to book places.

**Spring StampEssex 2012** will be held on 19 May at Leventhorpe School, Sawbridgeworth from 10am to 4pm, organised by Bishop's Stortford society.

**Autumn StampEssex 2012** will be held on 6 October at Spring Lodge Community Centre, Powers Hall End, Witham, CM8 2HE, from 10am to 4pm, organised by Witham society. Admission free and refreshments available.

## SOCIETY NEWS

### ALBUMS CLOSED

Epping Forest society has announced the death of a long-serving member, Malcolm Beard.

## Basildon Society News

### FROM THE SECRETARY'S ARMCHAIR by Alan Taylor

The Secretary and Committee wish you all a happy Christmas and New Year. I must thank all who turn up to our meetings. Without your support, there would not be a society now. As you meet your family and friends over the festive holiday, try to encourage them to come along to the club. Our programme cards for the new year should be out on 20 December, our Festive Evening. Our first meeting in the New Year, on 9 January, will be a display of "Law and Order" by Ray How.

I have got plenty of storage boxes for sale. Each time I order them, the price goes up. Now, as you sit down to do your stamps on these dark evenings, where do YOU put stamps?

### MEETING REPORTS by "Fly On The Wall"

#### 3 October - Three Members' Displays.

This was intended to be a display of Iraq by Paul Green, but Paul, who has recently moved to Tiptree, had to cancel at the last minute due to a chest infection. At only a few hours notice, Chris Cooksey stepped forward to display his outstanding collection of Southern Rhodesia revenues on mining certificates, to which a few Northern Rhodesia were added. John Snoding was unable to make the meeting, but showed Australian airmails from the 1930s and 1940s. In presenting John's material, the President drew attention to some of the gems, including mail dropped by parachute to small islands and some of the less-than-successful pioneering flights. Len Stanway then showed Brunei, from the controversial first issue of 1895 to 1973. The Chairman thanked our three speakers for stepping into the breach.

#### 18 October - AEPS President's Display - Canada (D A Armitage).

David, a well-known visitor from Bishop's Stortford and now ending his first year as Essex Association President, displayed stamps and postal stationery of early Canada, starting with early issues of the states, through pre-decimal Confederation issues and then taking

us through the various definitive and other issues to the middle of the 20<sup>th</sup> Century.



**7 November - Display by Malling P.S.**



This inter-society visit brought four familiar visitors from Kent. Tony Bosworth (left) led off with Falkland Islands stamps and postal stationery to 1950, which he explained was an old collecting interest that he has recently revived. Julie Lester (centre right) displayed postcards which were contrary to regulations and therefore charged letter rate and a selection of Victorian cards. Mike Thompson (right) displayed a study of the BEA air mail service stamps. Lindy Bosworth (centre left) displayed the Praga 1978 stamp exhibition issues, including covers, balloon flights, etc., starting with two sheets about the 1891 King of Bohemia Jubilee Exhibition, which provided that venue for the event. Finally, Mike Thompson returned with short displays of the Ceylon Pence stamps, Cape of Good Hope and the 1954 Australian Antarctic Exhibition.

### 15 November - Auction.

The auction was well attended with strong postal bidding. Realisations were as follows:

Lot	Sold	Lot	Sold	Lot	Sold
0	£2.30	93	£4.00	209	£2.00
1	£2.10	96	£2.00	214	£5.00
8	£3.00	97	£7.00	215	£2.00
9	£5.00	98	£5.25	216	£13.00
10	£5.00	106	£3.75	218	£6.00
12	£5.50	107	£2.00	221	£3.00
13	£2.50	108	£4.00	222	£5.00
16	£9.00	110	£12.00	223	£6.00
17	£4.00	112	£10.00	228	£4.00
18	£2.00	113	£23.00	232	£15.00
19	£2.00	114	£4.00	233	£8.00
22	£5.00	115	£2.50	234	£8.00
23	£4.00	116	£2.00	241	£4.00
24	£7.00	117	£4.00	242	£2.00
25	£3.00	118	£3.00	243	£6.00
26	£3.50	119	£3.00	245	£3.00
27	£2.50	120	£3.00	246	£2.00
30	£2.25	130	£4.00	247	£3.00
32	£2.00	133	£7.50	248	£2.00
33	£8.50	134	£3.00	259	£3.25
36	£12.00	135	£3.50	260	£2.00
38	£4.50	137	£3.00	266	£7.50
39	£4.00	147	£3.00	267	£2.00
40	£9.00	148	£3.00	268	£10.00
42	£12.00	150	£2.50	269	£5.00
45	£3.00	153	£5.00	270	£4.00
46	£4.00	155	£4.00	271	£3.50
47	£3.50	157	£4.00	273	£3.00
48	£10.00	163	£4.00	274	£2.00
49	£2.50	165	£5.00	276	£6.00
50	£4.50	171	£4.50	277	£8.00
51	£15.00	172	£7.00	287	£2.50
56	£10.00	174	£15.00	289	£2.00
57	£7.00	176	£8.00	290	£4.00
60	£2.75	177	£10.00	294	£7.00
61	£16.00	179	£3.00	300	£3.00
62	£2.00	180	£10.00	304	£4.75
63	£7.50	183	£4.00	314	£3.00
65	£2.00	184	£2.25	315	£16.00
67	£7.00	186	£5.00	316	£2.00
68	£30.00	189	£14.00	317	£4.25
69	£4.00	190	£2.75	319	£15.00
70	£20.00	191	£4.00	320	£5.50
71	£6.00	192	£7.50	321	£3.00
72	£2.00	193	£2.00	323	£3.25
73	£6.00	194	£2.75	328	£2.00
79	£4.00	195	£2.50	332	£4.00
81	£8.00	196	£3.50	336	£4.00
83	£2.50	197	£4.50	343	£7.00
84	£7.25	198	£2.75	344	£2.25
85	£12.00	199	£8.00	346	£10.00
86	£2.00	200	£2.25	347	£2.00
88	£6.50	201	£2.75	348	£2.00
90	£2.00	202	£2.00	349	£1.50
92	£3.50	204	£15.50	350	£8.00

**5 December - Fiji (C W Mead).**

Charlie took us through the history of Fiji stamps from the Fiji Times Express to the last Pre-Decimalisation issues in three sessions packed with interesting anecdotes and many rare items. For airmail enthusiasts, there were covers carried on the PanAm flying boat that found itself cut-off by the Japanese attack on Pearl Harbour and became the first commercial aircraft to circumnavigate the world.

**20 December - Festive Night & Tomex Quiz and Archive Display (Mrs C Coltman).**

This journal closed before the meeting took place. A report will be included in the next issue.

**FORTHCOMING BASILDON MEETINGS:**

**9 January: "Law and Order"** by Ray How.

**24 January: "B is for ?"** - Members' Displays.

**6 February: "Singapore"** by Len Stanway.

**21 February: Stamp Collectors' Question**

**Time.** Bring you problem items and queries to be discussed by an "expert" panel.

**5 March: Jamaica** by Paul Green.

**20 March: Display by Chelmsford & District P.S.**

All meetings will be at George Hurd Centre (doors open 7.30pm):

**EXCHANGE PACKET**

The Exchange Packet exists both to provide members with a forum to buy and sell material and to raise funds for the Society. Just over half of the membership take advantage of this either by receiving the exchange packets, of which ten boxes are normally in circuit at any one time, each containing ten books, or by submitting books for inclusion in the packets (or both). The other half is losing the opportunity for bargains!

Empty packet books are available from David Church or you can make your own as long as you keep to the standard pattern.

If you want to join the circuit, please contact Len Stanway for further information.

**WANTED - YOU!**

We require the help of all members. If you see or hear about anything that you feel should be mentioned in this journal, please let the Editor know. We also need volunteers to do a brief report of each meeting, to spread the workload.

**POST AND GO**

After several weeks delay, Basildon East Square began using the new Fourth Series Bird labels by 16 October.

**ARE YOU E-CONNECTED?**

If you have an e-mail address, you could save the society money and keep yourself up to date with local philatelic news, programme changes and auction catalogues by sending your e-mail address to the Editor.

Non-members are also invited to join the e-mailing list to receive this newsletter and other society information.

**MEMBER ACTIVITIES**

On 8 November, Len Stanway received a warm welcome when he displayed "Aspects of British Borneo" to Epping Forest Stamp Club. His next display will be "Aspects of Malaya" to Cambridge on 16 March.

John Cowlin will display Emergency Currency to Benfleet on 7 February. Charlie Mead will follow him with Fiji on 6 March.

**SMALL ADS**

Society members are entitled to insert one small advertisement free of charge in each issue. Please send your advert to the Editor.

**Malaysia** - First day covers for sale. Many issues available. Wants lists to Len Stanway.

**Article**

**The Whyte Arrangement (Part 6)  
by Len Stanway**

**Six-coupled designs**

(Part 5 was published in issue 16-2)

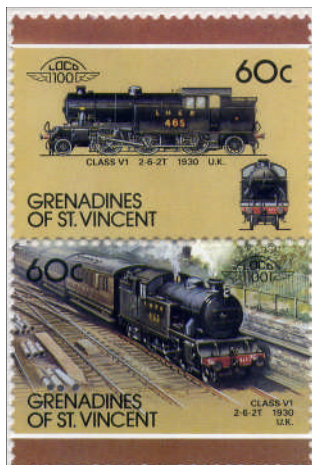
Early development of six-coupled designs reflected the same factors that drove the development of the four-coupled designs.

The pony truck of the 2-6-0, known as a "Mogul", gave better guidance and thus raised operating speeds on curving routes.



*The BR Standard 2-6-0 was designed by Riddles after Nationalisation based on a LMSR design for mixed passenger and freight duties.*

The 2-6-2 "Prairie" in tender form allowed a larger and wider firebox and, in Britain, was a particular favourite of the London & North Eastern Railway, while the 2-6-2T tank engine was able to haul heavy suburban trains and freight equally well forwards or backwards at speed, without the need to be turned around at termini or in goods yards. Many hundreds were built, especially by the Great Western Railway.



*Gresley designed the V1 2-6-2T for LNER suburban passenger duty, but the 2-6-4T was to be its preferred type. By contrast, the GWR used 2-6-2T types in several sizes for a wide variety of duties.*

The 2-6-4 arrangement was not used in tender form. Both the London and North Eastern Railway and the London Midland & Scottish Railway adopted the 2-6-4T layout for heavy suburban passenger work as it allowed large bunkers to be fitted to carry both coal and

extra water avoiding the need to stop to fill-up during the working day.

The 4-6-0 allowed a longer boiler for heavier loads. Many were built for mixed traffic and freight work by all British railways. The Great Western Railway standardised on this design for all kinds of passenger and mixed traffic work, whereas other British railways progressed to the 4-6-2 for their principal trains.

*The GWR's Castle 4-6-0 was at the heart of its fleet as standard tender locomotive for general passenger and freight purposes.*



The 4-6-2 "Pacific" was the perfect express passenger locomotive combining a big boiler with a large firebox. LNER A4 Class "Mallard" still holds the world land speed record for steam-powered railway vehicles at 126 mph.



*Stanier's Turbomotive 4-6-2 of 1935 for the LMSR was driven by a geared turbine instead of cylinders. Newly rebuilt in 1952 as a conventional locomotive "Princess Anne", it was destroyed in the Harrow disaster.*

The 4-6-4 "Baltic", unusual in tender form, allowed a huge firebox for high power output.

*Gresley built his "Hush-Hush" Class W1 4-6-4 as an experiment with very high pressure marine-type water-tube boiler. It was not a success and was rebuilt as a conventional locomotive.*



The 4-6-4T tank engine suited heavy freight and occasionally passenger work.



*The London, Brighton & South Coast Railway tried 4-6-4T tank engines for heavy passenger duty. After the Sevenoaks disaster (for which the loco was not to blame), all Southern passenger tanks were rebuilt as tender engines in the 1930s..*

## ARTICLES WANTED

Members are invited to write short articles for inclusion in the newsletter. Please submit them to the Editor.



## Philatelic Events in AEPS Societies January - March 2012

### January 2012:

- 3 Benfleet - Competitions & Mini-auction.
- 3 Sudbury - Afternoon Meeting.
- 4 Bishop's Stortford - Competitions, Party Night & Society Entertains Committee.
- 5 Witham - Informal / Bring & Buy.
- 9 Basildon - Law and Order (R E How).
- 9 Cheshunt - Display by Enfield P.S.
- 9 Frinton - Members' displays.
- 9 Rayleigh - Annual Quiz.
- 10 Braintree - K and L (Members).
- 10 Bury St Ed's - Portuguese Monarchy (J Dahl).
- 10 Chelmsford - Chile (M Fuller).
- 11 Brentwood - Something beginning with E, F, G.
- 11 Clacton - Bourse and Competition.
- 12 Hullbridge - My 2010 Philatelic Acquisitions.
- 14 Leytonstone & Wanstead - Transport.
- 17 Sudbury - Films.
- 18 Bishop's Stortford - Some Recent Acquisitions.
- 18 Goodmayes - Evening with Stuart Henderson.
- 19 Billericay - Let's Talk (D Bremner).
- 19 Witham - Annual General Meeting.
- 20 Colchester - Competitions.
- 21 **AEPS - Council Meeting**, Spring Lodge Community centre, Witham CM8 2HE. All societies should send delegates.
- 21 Epping Forest - Auction.
- 23 Frinton - President's Night.

- 23 Leytonstone & Wanstead - Informal meeting - Members' displays.
- 23 Rayleigh - The Ken Seymour Display (Mrs S Knight).
- 24 Basildon - B is for ? (Members).
- 24 Braintree - Prize Quiz for fun (C Evans).
- 24 Chelmsford - Something beginning with D.
- 25 Brentwood - Open Evening.
- 25 Ipswich - Theme Evening - J and 15.
- 26 Shoeburyness - AGM & Bourse.
- 28 **AEPS - WORKSHOP - Collecting Postal History. Henry Dixon Hall, Henry Dixon Road, Rivenhall End, Witham, Essex. CM8 3HR. Price (including lunch) £20. Book places with Ray How.**

### February 2012:

- 1 Bishop's Stortford - Newfoundland (T Hoad).
- 1 Clacton - Bourse and Competition.
- 1 Goodmayes - My Other Collections (Members).
- 2 Billericay - France in North Africa (A Ritchin).
- 2 Witham - Anything Beginning with "N".
- 6 Basildon - Singapore (L C Stanway).
- 6 Frinton - No Talking Required (Members).
- 7 Benfleet - Emergency Currency (J Cowlin).
- 7 Sudbury - Nyassa Company on Trial (J Dahl).
- 8 Brentwood - The Committee Entertains.
- 8 Ipswich - Franco-Prussian War Pt 1 (S Holder).
- 9 Hullbridge - Auction.
- 11 Leytonstone & Wanstead - Auction.
- 13 Cheshunt - Luxembourg (T R W Hawkins) & Competitions.
- 13 Rayleigh - Letter D (Members).
- 14 Braintree - Philatelic Valentine (Members).
- 14 Bury St Edmunds - Competitions.
- 14 Chelmsford - 16 sheets (Members).
- 15 Bishop's Stortford - War & Military Mail.
- 15 Goodmayes - Competitions.
- 16 Billericay - G to I (Members).
- 16 Witham - Two Members Display.
- 17 Colchester - A little bit of that and a little bit of that (S Clayton).
- 18 Bury St Edmunds - STAMP FAIR, British Sugar Sports & Social Club, Hollow Road, Bury St Edmunds, Suffolk IP32 7BB. 10am-4pm.
- 18 Witham - STAMP DAY, Royal British Legion Memorial Hall Newlands St, Witham CM8 2AZ.
- 20 Frinton - Competitions and Displays.
- 21 Basildon - Stamp Collector's Question Time.
- 21 Sudbury - Afternoon Meeting.
- 22 Brentwood - Open Evening.
- 22 Ipswich - Auction.
- 22-25 London - Stampex (including National multi-frame exhibition), Business Design Centre.
- 23 Shoeburyness - Competitions.
- 27 Leytonstone & Wanstead - Officers and Committee Entertain.
- 27 Rayleigh - Collecting Postcards (W E Trower).

- 28 Braintree - Choose a number (Members).  
 28 Chelmsford - Visit by Billericay & District P.S.

### March 2012:

- 1 ABPS - Award of Merit 2012. Closing date.  
 1 Billericay - George VI Postal History (B Cook).  
 1 Witham - Competitions and bourse.  
 5 Basildon - Jamaica (G P Green).  
 5 Frinton - Man's Marine Adventure (P Denly).  
 6 Benfleet - Fiji (C W Mead).  
 6 Sudbury - Competitions, informal, auction view.  
 7 B. Stortford - QV Diamond Jubilee (J Davies).  
 7 Clacton - Bourse and Displays.  
 7 Goodmayes - The Committee Entertains.  
 8 Hullbridge - Competitions.  
 10 EAPHSC - Annual General Meeting.  
 10 Kent - Dawes Cup Competition.  
 10 Leytonstone & Wanstead - Bridges (D Gerkin).  
 12 Cheshunt - To be advised.  
 12 Rayleigh - Masonic (M Harrington).  
 13 **AEPS - Executive Meeting.**  
 13 Braintree - Whatever you have - the Committee is entertained (Members).  
 13 Bury St Edmunds - GVI Postal History (K Burr).  
 13 Chelmsford - Duchy of Schleswig (C & B King).  
 13 Epping Forest - An Evening with Gerry King.  
 14 Brentwood - To be advised  
 14 Ipswich - Go by Cycle (B Sole).  
 15 Billericay - Open Night with Dealers.  
 15 Witham - USA (B Wilkinson).  
 16 Colchester - Luxembourg (J Charlton), London Underground (B Nunn).  
 19 Frinton - Czechoslovakia and Egypt (K Burr).  
 20 Basildon - Display by Chelmsford & District PS.  
 20 Sudbury - GB First Days before WW1 (N Amor), Aspects of SW Africa (D Gottesmann).  
 21 Bishop's Stortford - The Letter T (Members).  
 21 Goodmayes - GB Internal Air Mail (P Lister).  
 24 **AEPS - Council Meeting**, Sweyne Park School, Rayleigh. **Final entry date for Spring Competitions** - entries to Ray How.  
 24 Rayleigh - STAMP FAIR, Sweyne Park School.  
 26 Leytonstone & Wanstead - Stuart Henderson.  
 26 Rayleigh - Chairman's Night.  
 27 Braintree - I Kelly displays.  
 27 Bury St Edmunds - Pitcairn Islands 1928-1952 and Dog Sled Mail (B Allcock).

- 27 Chelmsford - Postcards (J ?).  
 28 Brentwood - Open Evening.  
 28 Ipswich - Olympic Games 1936 (A J Bosworth).  
 28 Sudbury - Annual Dinner (ticket only).  
 29 Shoeburyness - Munich Crisis 1938 (T Hickey).  
 29 Witham - Informal / Bring and Buy.

For venues, times, etc., contact the Editor or visit <http://www.wherewecanwego.com>, which is updated with the latest available information.

### BPS Contact information

#### Chairman:

Charlie Mead, 70 Gernons, Basildon, Essex SS16 5TN. 01268-522052 (H), 07956-570884 (M).  
[charlie.mead@aeps.org.uk](mailto:charlie.mead@aeps.org.uk)

#### Secretary:

Alan Taylor, 5 Easton End, Laindon, Essex SS15 6QB. 07899-822881.

#### Membership:

Mick Coltman, 17 Little Dodden, Basildon, Essex, SS16 5TZ. 01268-413952.

#### Library and Archives:

Ann Coltman, 17 Little Dodden, Basildon, Essex, SS16 5TZ. 01268-413952.

#### Exchange Packet & Newsletter items:

Len Stanway, 25 Clay Hill Road, Basildon SS16 5DD, 01268-522305.  
[len.stanway@btinternet.com](mailto:len.stanway@btinternet.com)

#### Auction:

Claude Crowder, c/o Mayville, Brentwood Road, Dunton Waylets, CM13 3SH.

[www.basildon.aeps.org.uk](http://www.basildon.aeps.org.uk)

### Press Date

The intention is that the next issue should be published on 1 April Your news or articles should be with the Editor by 20 March latest.



Published by Basildon Philatelic Society, 25 Clay Hill Road, Basildon, Essex SS16 5DD.  
 Founded 1968 - Non-Profit-Making - Affiliated to the Association of British Philatelic Societies  
 and the Association of Essex Philatelic Societies.



**Serving the stamp collectors and postal historians of Basildon.**