

# The Basildon Philatelist.

The Journal of Basildon Philatelic Society

Editor: L C Stanway FRPSL.

Vol. 16 No. 1 - July 2011

## Editorial:

The members at the Annual General Meeting took difficult decisions in the hope of building a stronger financial basis for the Society's future (see AGM report below). The next, and more difficult, step must be to promote the society to increase membership. Everyone must play his or her part in this. If you know any collectors (or potential collectors) encourage them to come along.

---

## National News

---

### PHILATELIC CONGRESS OF GREAT BRITAIN.

Congress is becoming increasingly important as the main opportunity each year to enter into discussions with ABPS officers and all readers are encouraged to consider attending to ensure that the grass roots views reach the "powers that be" in the hobby (and vice versa). It is always a wonderful chance to see outstanding displays and meet other collectors in all disciplines.

Congress 2011 was held at Queen's Hotel, Southsea from 16-19 June. It was well attended, beginning with a display of Portsmouth postal history, then progressing through a wide range of talks and displays on a transport theme, including Transatlantic Mail (Cliff Wheatley), Admiral Byrd's flights (Graham Booth), Steamships (Malcolm Roberts), Australia and New Zealand mails (Colin Tabcart), Mails Under London (Len Stanway), Edinburgh Mail by Rail (Stephen Parkin), the Siege of Paris (Ashley Lawrence), plus a newly discovered first day cover of the Tasmanian Courier 4d Plate 2 (Koichi Sato), antique writing instruments (Gerald Mariner), 3-sheet and one-frame competitions and displays by members of local societies. The Kay Goodman Memorial Lecture by Susan Oliver on the theme of "Have the Federations Passed Their Sell-by Date?" generated a strong exchange of views. The RDP ceremony was held in Portsmouth Guildhall, after which we were allowed by the Lord Mayor to view the Portsmouth collection of

civic silver and charters. The event was generously sponsored by Stanley Gibbons.

Congress 2012 will be held at Queen's Hotel in Perth, Scotland, from 19-22 October, overlapping with the National exhibition (q.v.).

---

### ABPS ANNUAL GENERAL MEETING

The AGM was held on the last day of Congress. The officers were re-elected and ideas for future developments were discussed.

The Council, which was attended by federation representatives between AGMs, has not met for several years and the future organisation of the ABPS will be reviewed with elimination of the Council the likely outcome. This will require amendment of the ABPS Constitution.

The ABPS needs a volunteer to become the focal point for contact between ABPS and both societies and federations.

New model rules and marking scales for society competitions will soon be circulated to all member societies. (Although not mentioned at the meeting, there is the aim of making progressive achievement of suitable grades in society and federation competitions, judged by ABPS-approved judges, a mandatory requirement for entry into national and thus international competition.) All ABPS-registered judges will be expected to be recertified on a regular basis through approved seminars. Chris King is now responsible for all competition activity including the 2-day exhibiting/judging seminars leading to national accreditation.

The next annual meeting will be at 2pm on 21 July 2012 at RPSL. Please advise your Editor of any issue you wish raised.

---

### WORLD POST DAY

How can we get the society and hobby noticed on World Post Day 9 October 2011, which marks the anniversary of the establishment of the Universal Postal Union? Tell us now!

---

## 2011-2012 NATIONAL EXHIBITIONS

The 2011 ABPS National Exhibition was hosted by Sheffield Philatelic Society on 6-7 May at Ponds Forge International Sport Centre, Sheffield. It was reported to have been a very successful event.

The 2012 ABPS National Exhibition will be held in Scotland on 18-20 October 2012 at Dewar's Centre, Glover Street, Perth PH2 0TH. Expressions of interest have been requested from dealers and exhibitors. (A national multi-frame thematic, open and postcard competition will also be held at Stampex from 22-25 February.)

---

## ABPS WEBSITE

The all-new ABPS website contains a wealth of valuable information, with more to come. Please visit it at <http://abps.org.uk/>. All ABPS societies are listed with contact details. Please advise the ABPS of any errors.

---

## ABPS HANDBOOK

The new edition of the ABPS Directory is in preparation. The Chairman, John Baron, promised at the AGM to complete publication by the start of the autumn season. The Speakers book was issued earlier this year and updates are being published in *ABPS News* which is sent to all ABPS society secretaries.

---

## ABPS AWARD OF MERIT

Each year, the ABPS honours up to 15 grass roots philatelists that have made an outstanding contribution to a local or specialised society. Nomination forms for the 2012 awards can be obtained from Susan Oliver, ABPS Awards Committee Chairman/Secretary, 46 Woodville Road, Ham, Richmond-upon-Thames, TW10 7QN 020 8940 9833 [susan.m.oliver@virgin.net](mailto:susan.m.oliver@virgin.net).

Nominations now can only be submitted by an ABPS member society and not by a federation. The closing date for entries is 1 March 2012.

---

## MIDPEX

Midpex 2011 on 2 July will be at the Warwickshire Exhibition Centre, just south of Leamington and close to the M40. It has more than double the floor area of the previous venue, all on one level, and free parking for 2000 vehicles (including coaches). Specialist societies will have twice the frame space, plus table and seating on each stand. Friends of Thematica will hold their competitions at the event. Catering will be on a mezzanine overlooking the stands with drinks available at ground level. There will be a free Shuttle Bus between Leamington Station (Chiltern Railways) and the Centre throughout the day.

A preliminary booking has also been made for Midpex 2013 on 6 July 2013. For further information contact [bobharper@btinternet.com](mailto:bobharper@btinternet.com)

---

## BRITISH THEMATIC ASSOCIATION

For information on BTA activities, contact Peter Denly, 9 Oaklands Park, Bishops Stortford, Hertfordshire CM23 2BY or [www.brit-thematic-assoc.com](http://www.brit-thematic-assoc.com).

---

## Essex News

---

## AEPS EVENTS

**AEPS Council Meeting** was held at **Spring StampEssex** on 26 March. StampEssex was well attended. Christopher Cooksey won the Aerophilatelic Trophy and came second in the Postal History competition. Our other entrant, Len Stanway, had to settle for a raffle prize!

---

## AUTUMN COMPETITION ENTRIES WANTED!

All AEPS societies are able to enter the 16-sheet Thematic, Cinderella, Social, Literature and Modern Material (stamps, postal history, aerophilatelic under 30 years old) competitions. Society secretaries will soon receive entry forms. Support has been disappointing in recent years, so please give your support now.

---

## PHILATELY IN ESSEX 2011

If you want to find out about any society in the county, county competition rules or a

catalogue of Essex event covers, speakers, judges, etc., please ask the Secretary to show you Philately In Essex, the AEPS Handbook.

### NEXT AEPS EVENTS

The next Council meeting, to which we can send up to 3 delegates, will be at 2.30pm on 9 July at **Spring Lodge, Witham CM8 2HE** (Note change of venue). If you have issues to raise, please contact Len, Alan or John Cowlin.

**Autumn StampEssex** 2011 will be held on 15 October at Runnymede Hall, Benfleet.

**Spring StampEssex** 2012 will be held on 19 May at Bishop's Stortford (venue to be confirmed) from 10am to 4pm.

### SOCIETY NEWS

**Clacton** society has moved to a downstairs function room, which now makes their venue wheelchair-accessible.

#### *Basildon Society News*

### NEW MEMBERSHIP SUBSCRIPTIONS

See AGM report below.

### MEETING REPORTS by "Fly On The Wall"

#### 4 April - Rhodesia and Southern African Airmails - Eric Day.



Eric took the place of Ray How, who had been called away on business at short notice. His first half traced the story of Rhodesia from the establishment of the British South Africa

Company in the late Nineteenth Century to the division into Northern and Southern Rhodesia in King George VI's era. Many scarce and interesting items were displayed, including Eric's speciality, the Admirals issue.

His second half looked at airmails in South Africa and Rhodesia from the first internal airmail, through the introduction of Imperial Airways through services to the UK and other similar services from European airlines, to the Comet 1 Africa service launch. At one stamp exhibition, it was possible to send a card anywhere in the world for just one halfpenny!

The Chairman thanked Eric for providing a fine display at short notice.

### 19 April - Auction.

The auction was fairly well attended, with more room bidders than in October and a substantial number of lots going to postal bidders. Realisations were as follows:

Lot	Sold	Lot	Sold	Lot	Sold
1	£4.00	86	£3.50	188	£2.00
3	£4.00	87	£7.00	198	£3.00
4	£2.00	88	£10.00	201	£8.00
5	£3.20	95	£2.00	203	£4.00
6	£2.00	96	£4.00	205	£2.00
7	£4.00	103	£2.50	209	£14.00
8	£2.70	105	£40.00	211	£2.50
11	£2.00	106	£30.00	212	£5.00
12	£3.00	113	£16.00	213	£4.00
21	£9.00	122	£2.00	214	£12.00
22	£4.00	137	£6.00	217	£4.50
23	£5.00	138	£5.00	219	£2.00
24	£4.00	141	£5.50	220	£3.80
26	£3.00	143	£10.00	222	£2.00
27	£3.00	144	£5.00	223	£2.25
28	£2.00	145	£5.00	231	£7.00
29	£4.40	147	£2.00	232	£4.50
31	£3.00	148	£2.50	235	£3.00
33	£7.00	149	£2.00	239	£40.00
38	£4.00	150	£2.00	244	£8.00
39	£2.00	151	£2.00	246	£4.00
40	£2.50	152	£2.00	247	£2.00
42	£3.00	154	£4.00	253	£2.00
43	£14.00	155	£4.00	254	£6.00
45	£3.00	156	£3.00	255	£2.70
48	£20.00	157	£10.50	256	£8.00
49	£5.00	158	£8.50	258	£3.00
51	£3.00	159	£4.20	259	£3.00
52	£2.00	161	£3.50	262	£4.00
53	£4.00	165	£2.00	263	£2.75
58	£3.50	167	£2.00	264	£5.25
61	£2.00	168	£2.00	271	£2.00
63	£2.00	169	£2.20	272	£7.25
65	£7.25	170	£3.50	276	£10.00
66	£4.50	171	£7.00	277	£12.00
67	£9.00	176	£3.00	279	£5.50
68	£9.50	177	£2.50	281	£8.00

Lot	Sold	Lot	Sold	Lot	Sold
69	£4.00	178	£6.00	291	£2.00
70	£2.50	180	£7.00	293	£3.00
72	£6.00	181	£10.00	294	£7.50
75	£4.00	182	£3.00	295	£2.00
79	£4.50	183	£4.50	296	£3.00
80	£2.00	184	£5.00	298	£4.00
81	£2.00	185	£3.00	300	£10.00

## 21 April - Basildon v Billericay Quiz.



Billericay hosted this year's competition. Basildon was represented by Charlie Mead, Anne and Len Stanway, and Billericay by Richard Alexander, Terry Stenning and Jean Taylor. Quizmaster Jim Charlton and Scorer Eric Day did a masterful job, producing a challenging but highly enjoyable quiz, in which the participants chose the questions by number from a list of 100. Basildon retained the trophy with 80 marks against Billericay's 44.

## 17 May - Competitions & Silent Quiz.

Charlie Mead had prepared a series of cards with questions and answer papers, which were distributed to entertain members while judging took place. After a tie-breaker, Chris Cooksey was declared the winner.

In the competitions themselves, judged by Lynn and Malcolm Thomas, the winners were: Traditional: Chris Cooksey (50<sup>th</sup> Anniversary of the Occupation of Matabeleland); Postal History: Len Stanway (Richmond Postmarks 1765-1840); Aerophilatelic: Chris Cooksey (South Rhodesia Active Service Letter Cards); Thematic and Ladies Trophy: Ann Coltman (South Africa in the 1800s); Junior Thematic: Chloe Coltman (Ballet); Cinderella: Len Stanway (Metropolitan Railway); Modern Material: Len Stanway (Malaysia PosDaftar).

## 6 June - Annual General Meeting.

A well-attended meeting was dominated by the problem that hall hire cost three times the income from membership subscriptions. Many suggestions had been considered by the Committee but there was no single solution that would solve the problem at a stroke. These were set out in the Treasurer's Report. After extensive discussion and comparison of charges by other societies, the proposal from the floor was to raise the annual subscription by £2 to £13 and follow the lead of Colchester and Brentwood by introducing an attendance fee of £1 for each meeting attended, which would also cover refreshments when these are provided. This was expected to cover about half of the shortfall and was adopted with only one vote against. Members were urged to try to recruit new members and further economies will be sought to reduce administrative overheads.

Ian McElwain will become Programme Secretary and Geoff Hammond will join the Committee. Geoff will work with Ann Coltman as joint Competition Registrars. All other officers and appointments remain unchanged.

## 21 June - Members' Recent Acquisitions.

Eight members brought material to display, giving us a wide range of displays. Alf Potter opened the evening with Boxing stamps. John Snoding followed with Scouting related material including a study of Jack Cornwell VC. Next was Claude Crowder with New Zealand postal fiscal stamps. Ian McElwain showed the souvenir labels issued for the 1937 Coronation.

David Church started the second session with Penny Blacks used on cover during May 1840, with only a few missing dates! Maggie Thompson showed Dutch charity stamps and Spanish galleons, all triangular, of course! Geoff Hammond showed Canada's prolific issues for the Vancouver 2010 Olympics.

Len Stanway completed the evening by displaying Malaysia's 2011 issues.

## FORTHCOMING BASILDON MEETINGS:

On 13 July, Basildon displays to Brentwood P.S. If you would like to display, contact Charlie Mead as soon as possible.

Routine meetings at George Hurd Centre (doors open 7.30pm):  
 4 July - South African Homelands (M Flack).  
 19 July - Malayan Revenues (P F Cockburn).  
 1 August - Scottish Postal History (D W Sibley).  
 16 August - Great Britain 1830s-1901 (K Burr).  
 5 September - Ladies Night.  
 8 September - Display to Hullbridge PS.  
 20 September - The Post Office Went To War (Mrs C Earle).

### WANTED - YOU!

We require the help of all members. If you see or hear about anything that you feel should be mentioned in this journal, please let the Editor know. We also need volunteers to do a brief report of each meeting, to spread the workload.

### COMPETITION ENTRIES WANTED

The AEPS Autumn Competitions will be displayed at Benfleet on 15 October. I'm sure that you would agree that we want to see the Society well represented in the displays at this event. How do we achieve that? Well, it is down to **YOU**. By **mid August**, we need 16-sheet entries in:

- Thematic;
  - Cinderella;
  - Social;
  - Literature; or
  - Modern Material (stamps, postal history or aerophilatelic under 30 years old) categories.
- If you can fill one of our two allocated places in each competition, please tell Ann Coltman asap.

We also need a team for the Quiz scheduled to be held at StampEssex at Thundersley. Volunteers welcome!

### ARE YOU E-CONNECTED?

If you have an e-mail address, you could save the society money and keep yourself up to date with local philatelic news, programme changes and auction catalogues by sending your e-mail address to the Editor.

Non-members are also invited to join the e-mailing list to receive this newsletter and other society information.

### MEMBER ACTIVITIES

Are you doing something outside the society that members may be interested to hear about? Have you heard about another member's activities or achievements? If so, please let the Editor know.

Forthcoming engagements known are all shown in the AEPS programme below.

### SMALL ADS

Society members are entitled to insert one small advertisement free of charge in each issue. Please send your advert to the Editor.

**Malaysia** - First day covers for sale. Many issues available. Wants lists to Len Stanway.

### Article

#### The Whyte Arrangement (Part 4) by Len Stanway

#### Four-coupled designs (continued)

(Part 1 was published in issue 14-4, Part 2 in issue 15-3 and Part 3 in issue 15-4)

A problem with the basic 0-4-0 arrangement described in Part 3 was that it was unstable at speed and did not like taking curves. It was quickly realised that putting a leading axle ahead of the driving axles, with smaller wheels and extra sideways freedom of movement ("side play"), controlled by springs, steered the locomotive into bends and reduced sideways oscillation ("hunting"). Thus was the 2-4-0 arrangement born. It became popular for suburban passenger services in the mid-Victorian period.

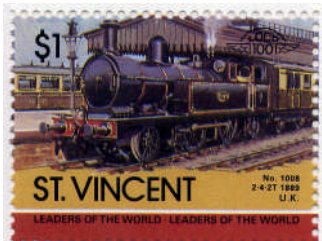


*Indian 2-4-0 passenger locomotive.*

*Victorian 2-4-0T locomotives are still the mainstay of daily services on the Isle of Man Railway.*



The tank engine version of the 2-4-0, the 2-4-0T, had only limited fuel capacity and suffered from instability when running backwards, so a second, trailing, axle under the bunker increased its capacity and gave that stability. The 2-4-2T was used on both lighter suburban and rural passenger trains.



*Lancashire & Yorkshire Railway  
2-4-2T.*

The tender version, the 2-4-2 was uncommon. It was known as the "Columbia" arrangement.

*Romanian 2-4-2  
locomotive - a rare  
type.*



At higher speeds, on tight curves and for heavier locomotives, the single leading axle was unsatisfactory, so use of a bogie provided extra freedom of movement and enabled weight distribution over more axles without loss of stability. The 4-4-0 was the standard workhorse for passenger services in the later Victorian period, and much later on some railways. It was so common in the USA and Canada, that this arrangement was dubbed the "American" type.

*How the  
West was  
Won -  
Canadian  
"American"  
4-4-0.*



*Record Holder - GWR  
4-4-0 "City of Truro"  
was the first 100mph  
locomotive.*

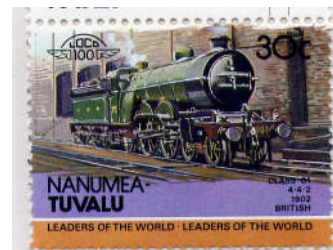
*Modern 4-4-0 of  
Great Northern  
Railway (Ireland).*



4-4-0T tank engines provided the basic motive power for the London Underground in the steam era.

A drawback with the 4-4-0 was the restricted space for a fire grate and ash pan in the vicinity of the rear driving axle. In consequence, some railways opted for the 4-4-2 for their express trains, which allowed a longer boiler with a larger grate. The 4-4-2 was often referred to as the "Atlantic" type.

*Newfoundland 4-4-2  
express locomotive*



*East Coast  
racehorse - Great  
Northern Railway  
(England) 4-4-2  
"Atlantic".*

The 4-4-2T tank version was used for some lightly-laid rural lines as it gave a low axle load.

The 4-4-4T was the ultimate four-coupled passenger tank engine. In Britain, only two railways, the LNER and the Metropolitan Railway used this arrangement. It had the big disadvantage that only one third of the locomotive's weight could be used to provide power for starting a train.

In the USA, train sizes grew to the point that extremely large locomotives had to be used. One unconventional type used on the Pennsylvania Railway was the "Duplex" 4-4-4-4, which had two pairs of separately-driven driving wheels with a trailing bogie to carry the large firebox required to heat the very large boiler.



*Penn. Rly.  
(USA) 4-4-4-4  
on a  
Monaco  
stamp.*

## ARTICLES WANTED

Members are invited to write short articles for inclusion in the newsletter. Please submit them to the Editor.

## RESOURCES AVAILABLE

Readers interested in Zeppelin mail are recommended to visit [www.eZep.de](http://www.eZep.de), the English language website of the Zeppelin Study Group.



## Philatelic Events in AEPS Societies July - September 2011

### July 2011:

- 4 Basildon - South African Homelands (M Flack).
- 5 Benfleet - (Provisional date).
- 6 Bishop's Stortford - Anyone for Tennis? (R Backhouse).
- 6 Goodmayes - S Sheets - Letter R (Members).
- 7 Billericay - Up to 10 pages from my Album.
- 7 Witham - Choose a number (Members).
- 12 Epping Forest - Bits & Bobs (M R Thompson).
- 13 Brentwood - Display by Basildon P.S.
- 14 Hullbridge - My Life as a Philatelist (M Nunn).
- 15 Colchester - Annual General Meeting and Competition.
- 11 Rayleigh - Bohemia & Moravia 1939-1945 (A J Bosworth).
- 19 Basildon - Malayan Revenues (P F Cockburn).
- 19 Sudbury - Delivering the Mail with Royal Mail Postcards (I G Pittway).
- 20 Bishop's Stortford - Machine Cancel Postmarks.
- 20 Goodmayes - (Provisional date).
- 21 Billericay - French Stamps (G Oliver & J Cowlin).
- 21 Witham - Richmondshire Postal History & Postmarks (L C Stanway).
- 25 Rayleigh - Acquired in 2010 (Members).
- 27 Brentwood - Open Evening.
- 28 Shoeburyness - Jamaica (R Hart).

### August 2011:

- 1 Basildon - Scottish Postal History (D W Sibley).
- 2 Benfleet - (Provisional date).
- 3 Bishop's Stortford - 8 Sheets of Your Choice.

- 4 Witham - Informal / Bring and Buy.
- 8 Rayleigh - Bourse.
- 9 Epping Forest - Recent Acquisitions.
- 10 Brentwood - Open Evening.
- 11 Hullbridge - Bourse.
- 16 Basildon - Great Britain 1830s to 1901 (K Burr).
- 16 Sudbury - Members' Displays.
- 17 Bishop's Stortford - Printing Methods (I Stevenson).
- 18 Witham - The Committee Entertains.
- 22 Rayleigh - An Evening with Mark Routh.

### September 2011:

- 1 Billericay - Display by Goodmayes P.S.
- 1 Witham - The Smaller Channel Islands (M R Thompson).
- 5 Basildon - Ladies Night.
- 6 Benfleet - (Provisional date).
- 6 Sudbury - (Provisional date).
- 7 Bishop's Stortford - Competitions & The President Entertains.
- 7 Clacton - Competition and Bourse.
- 7 Goodmayes - (Provisional date).
- 8 Hullbridge - Display by Basildon P.S.
- 10 Leytonstone & Wanstead - (Provisional date).
- 12 Cheshunt - (Provisional date).
- 12 Rayleigh - Australasia (Members).
- 13 Braintree - (Provisional date).
- 13 Bury St Edmunds - (Provisional date).
- 13 Chelmsford - New Acquisitions (Members).
- 13 Epping Forest - (Provisional date).
- 14 Brentwood - The Life and Times of Winston Churchill (S A Moorcroft).
- 14 Ipswich - (Provisional date).
- 15 Billericay - Falkland Islands Miscellany (G Miller).
- 15 Witham - Chairman's Evening.
- 16 Colchester - (Provisional date).
- 19 Frinton - Bourse and Competitions.
- 20 Basildon - The Post Office Went To War (Mrs C Earle).
- 20 Sudbury - (Provisional date).
- 21 Bishop's Stortford - The Year 1949.
- 21 Goodmayes - (Provisional date).
- 24 Frinton - Stamp Fair & Exhibition, Frinton Community Centre, Triangle Shopping Centre, Soken House, Frinton CO13 0AU, 10am-4pm.
- 26 Leytonstone & Wanstead - (Provisional date).
- 26 Rayleigh - Additional Halfpenny (P Denly), Strike Mail (B Watson).
- 27 Braintree - (Provisional date).
- 27 Bury St Edmunds - (Provisional date).
- 27 Chelmsford - English Postal History (J Grimwood-Taylor).
- 28 Brentwood - Open Evening.
- 28 Ipswich - (Provisional date).
- 29 Shoeburyness - Anschluss, the German Annexation of Austria 1938 (I Nutley).

29 Witham - Informal / Bring and Buy.

For venues, times, etc., contact the Editor or visit <http://www.wherewego.com>, which is updated with the latest available information.

### 50 Years Ago

On 29 April 1961, Leytonstone, Wanstead & District P.S. hosted the 17<sup>th</sup> AEPS Convention at Wanstead House. A cover was designed by Reg Lee with the AEPS emblem printed in either blue or red. Covers were sold for 4d. It has been stated that a postcard was issued to the same design, but no copies have been seen to date by the author of the AEPS souvenir catalogue (published in "*Philately in Essex*", published by the AEPS). A 38mm diameter double ring handstamp featured the Essex shield. The temporary post office at the event cancelled 3172 items (3034 ordinary, 67 Recorded Delivery, 70 Registered and 1 Express). The society arranged for covers to be serviced by ordinary post for 9d, by recorded delivery (1/6) or registered post (2/6).



A proof strike of handstamp on GPO paper survives in private hands. The covers are both known with a wide variety of different stamps, including Wildings with graphite lines and high value Regionals. An orange publicity label featured the AEPS emblem. The postmark was also used on plain covers and postal stationery. Theydon Bois society (long

since defunct) used the occasion to post postcards to its members giving notice of its next meeting.

### BPS Contact information

#### Chairman:

Charlie Mead, 70 Gernons, Basildon, Essex SS16 5TN. 01268-522052 (H), 07956-570884 (M). [charlie.mead@aeps.org.uk](mailto:charlie.mead@aeps.org.uk)

#### Secretary:

Alan Taylor, 5 Easton End, Laindon, Essex SS15 6QB. 07899-822881.

#### Membership:

Mick Coltman, 17 Little Dodden, Basildon, Essex, SS16 5TZ. 01268-413952. Mick is currently recovering from an operation, so please contact Ann (below) until further notice.

#### Library and Archives:

Ann Coltman, 17 Little Dodden, Basildon, Essex, SS16 5TZ. 01268-413952.

#### Exchange Packet & Newsletter items:

Len Stanway, 25 Clay Hill Road, Basildon SS16 5DD, 01268-522305.

[len.stanway@btinternet.com](mailto:len.stanway@btinternet.com)

#### Auction:

Claude Crowder, Mayville, Brentwood Road, Dunton Wayletts, CM13 3SH. 01268-414143.

[www.basildon.aeps.org.uk](http://www.basildon.aeps.org.uk)

### Press Date

The intention is that the next issue should be published on 1 October. Your news or articles should be with the Editor by 20 September.



Published by Basildon Philatelic Society, 25 Clay Hill Road, Basildon, Essex SS16 5DD.  
Founded 1968 - Non-Profit-Making - Affiliated to the Association of British Philatelic Societies  
and the Association of Essex Philatelic Societies.

***Serving the stamp collectors and postal historians of Basildon.***

